

Innovation
for A Better Life

COSLINK ESS

**CHANGE
YOUR ENERGY**

EnerMax-C&I

Distributed Hybrid Integrated Active Control ESS

**PROVIDE
ENERGY
INDEPENDENCE**

www.coslinkess.com
Official Authorized ESS Integrator of CATL



Features and Advantages



Highly integrated

- Support of simultaneous input from batteries and PV
- Assure 24-hour green power for industrial and commercial use
- Simplified after-sales operation and maintenance
- DC/AC side modular design



Security

- Support of distributed layout
- Distributed arrangement, higher security
- Cluster management: less self-power-consuming



Smart

- EMS&Cloud real-time monitoring
- AC/DC flexible management
- Built with active control optimizer
- Support of multiple parallel connection

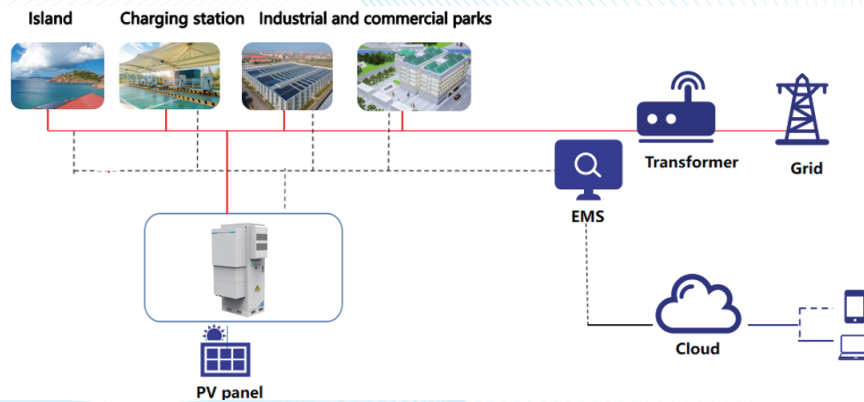
The Leader of ESS Active Control Technology
Provide Professional OEM/ODM Solution and Product



UN38.3

Model		CS30KP70S	CS40KP100S
PV side	Maximum Input Power [kW]	36	48
	Maximum Input Voltage [Vdc]	1000	1000
	MPPT Operating Voltage Range [Vdc]	180-900/630	180-900/630
	Maximum Input Current [A]	36	36
	Maximum Short Circuit Current [A]	42	42
	MPPT Array String Number	2	2
Battery side	Battery Type	LFP	LFP
	Battery Rated Voltage [V]	256	358.4
	Rated Capacity [kWh]	71.68	100.352
	Battery Voltage Range [V]	220~800	220~800
	Maximum DC Current [A]	100	100
AC Side (on-grid)	Rated Power [kW]	30	40
	Rated Voltage [V]	400	400
	Rated Frequency [Hz]	50/60	50/60
	Power Factor Range	0.8 ind...0.8 cap	
Current THD (@rated power)	<3%		
AC Side (off-grid)	Rated Power [kW]	30	40
	Rated Voltage [V]	400	400
	Rated Frequency [Hz]	50/60	50/60
	Rated Current [A]	45	60
System Parameters	Weight [kg]	~950	~1180
	Cabinet Size [W*D*H, mm]	800*950*2200	
	Inverter Size[W*D*H, mm]	800*280*600	
	Working Temperature [°C]	-25--+60 (>45derating)	
	Relative Humidity	5-90%	
	Cooling	Smart temperature control	
	IP Grade	IP54	
	Fire-Proof	Aerosol	
Communication	RS485,CAN		

Topology Diagram



Note: The above information may subject to update without prior notice.